

Telangana State Remote Sensing Applications Centre
Planning Department, Government of Telangana

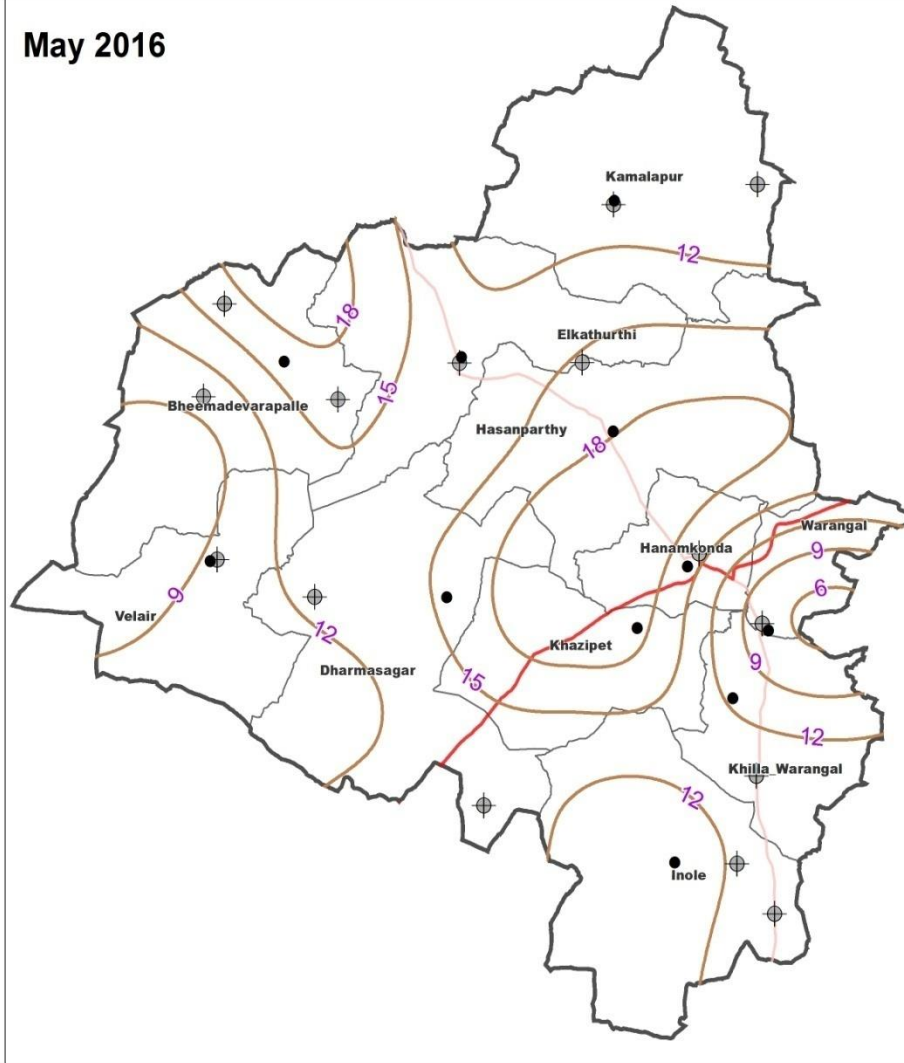
- DKIC centre was inaugurated on 4th of June,2017 in Warangal Urban District by Sri Kadiyam Srihari, Hon'ble Deputy Chief Minister Telangana state along with Sri B.P.Acharya, Spl.Chief Secretary to the Government, Planning Department, Telangana State.



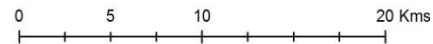
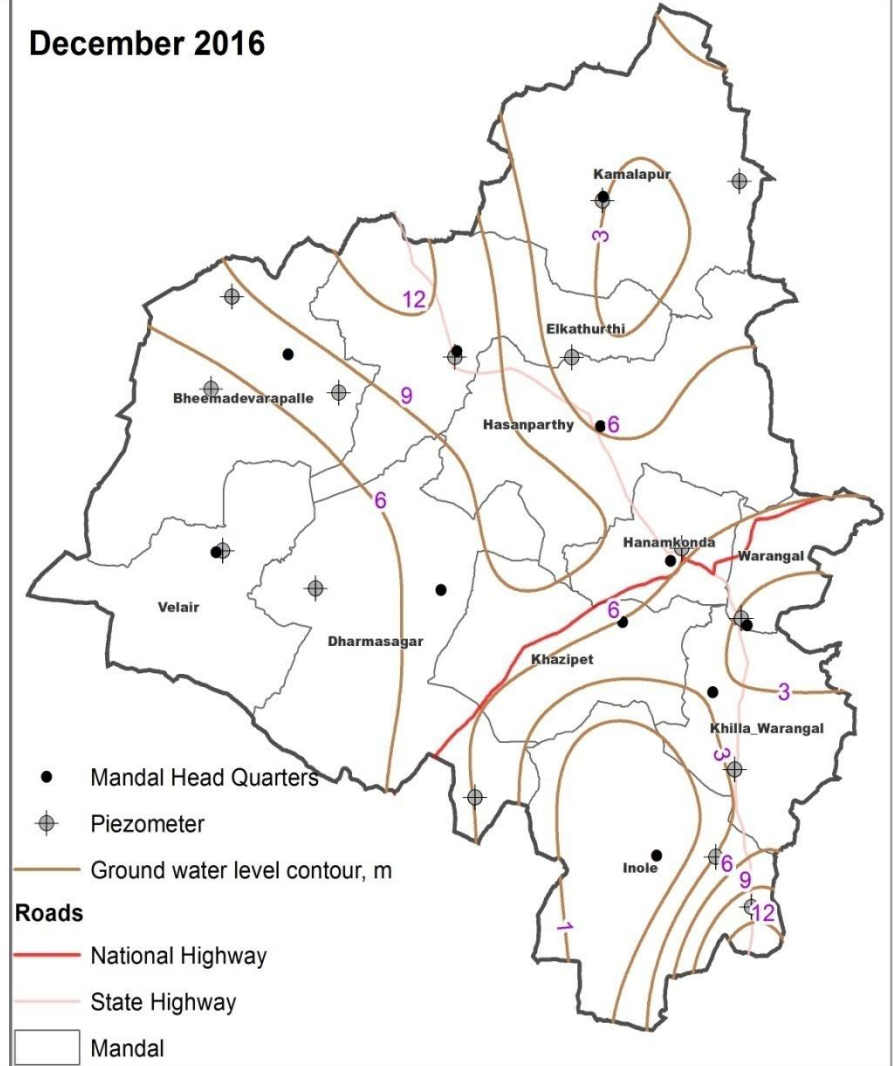
GROUND WATER LEVEL MAP

WARANGAL URBAN DISTRICT

May 2016



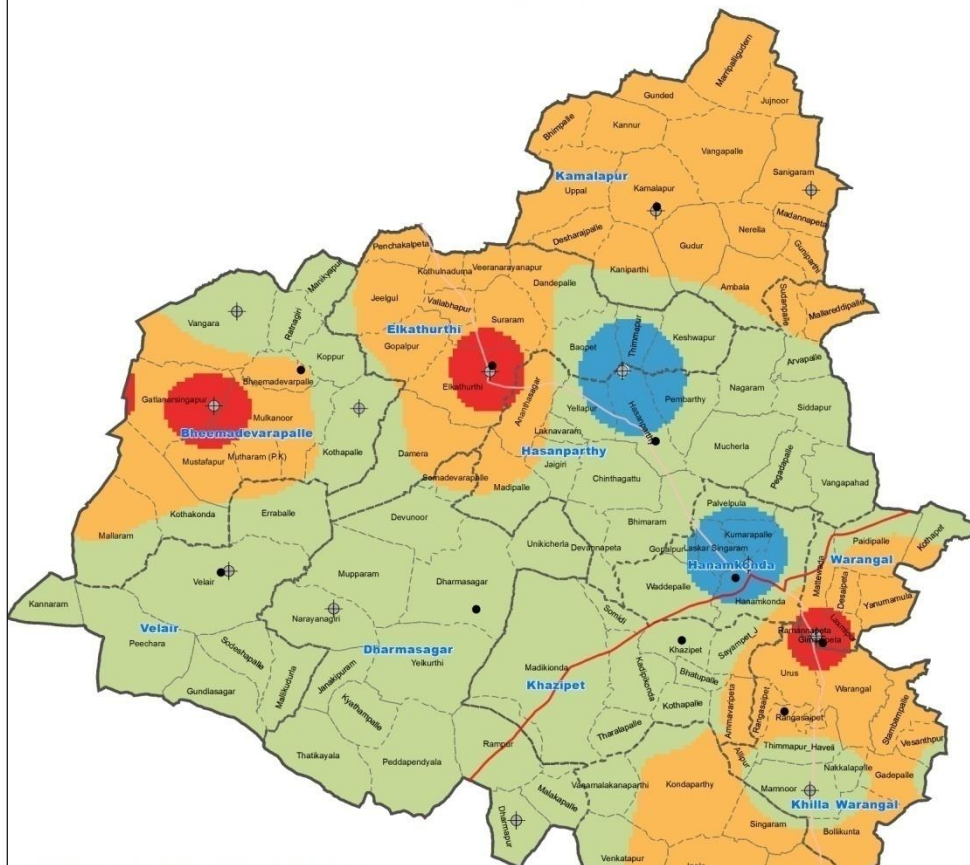
December 2016



PREPARED BY
TELANGANA STATE REMOTE SENSING APPLICATIONS CENTRE

PLANNING DEPARTMENT, GOVT. OF TELANGANA
B BLOCK, 8th FLOOR, SWARNAJAYANTHI COMPLEX,
AMEERPET, HYDERABAD

GROUND WATER LEVEL FLUCTUATION WARANGAL (U) DISTRICT



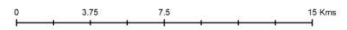
**DEPTH TO GROUND WATER LEVELS REPORT FOR SHALLOW TABLE
PIEZOMETERS & TSCBTMP PZs**

Sl. No	VILLAGE	Programme	C/NC	Variations in ground water level during December, 2016 in comparison to		
				Depth to water level (gl) in m		
				Dec' 15	Dec' 16	Dec' 15
1	Narayanagiri	HP I	NC	10.60	4.71	5.89
2	Hanamkonda	HP II	NC	13.95	6.49	7.46
3	Mamnoon	HP I	C	8.46	3.46	5.00
4	Seethampet	HP I	NC	12.29	4.58	7.71
5	Charboudi	HP II	NC	3.90	2.82	1.08
6	Gatla Narsingapur	HP I	NC	5.90	5.20	0.70
7	Vangara (NC)	HP I	NC	14.15	8.46	5.69
8	Kamalapur	HP I	C	6.00	3.06	2.94
9	Shantigarani	HP II	C	6.10	3.49	2.61
10	Dharmasuri	TMP	NC	10.62	5.89	4.73
11	Velair	TMP	C	9.64	4.26	5.38
12	Kothapally	TMP	NC	12.25	7.78	4.47
13	Elkathurthy	TMP	NC	11.75	10.87	0.88
14	Punnelu	TMP	C	6.66	3.20	3.46
15	Panthini	TMP	C	11.34	10.70	0.64
DISTRICT AVERAGE				9.57	5.66	3.91

- Mandal Head Quarters
- ⊕ Piezometer
- Roads
- National Highway
- State Highway
- ▭ District
- - - Mandal
- - - Village

Rise in Ground Water Levels during December 2016 in comparison to December 2015 (Metres)

- 0-2
- 2-4
- 4-6
- 6-8



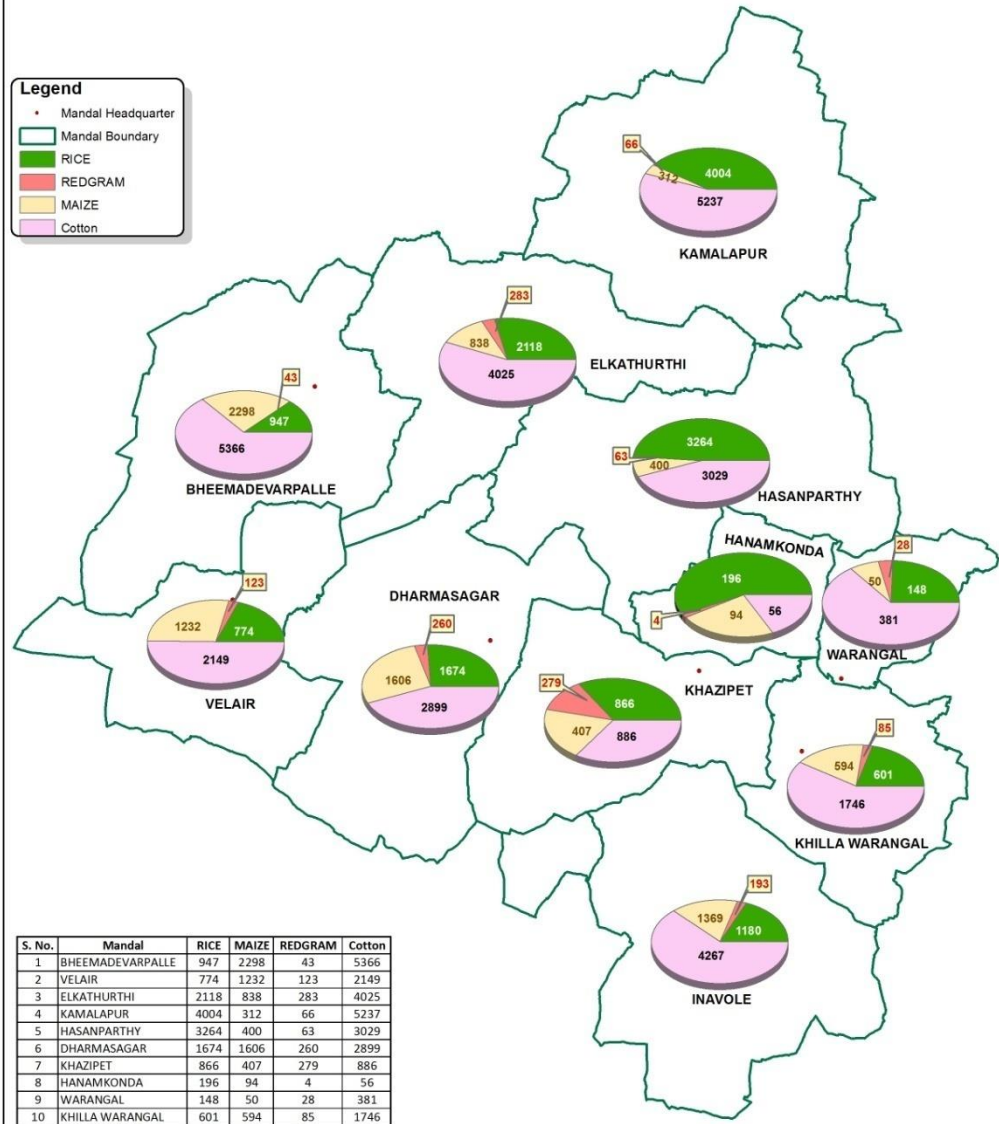
PREPARED BY
TELANGANA STATE REMOTE SENSING APPLICATIONS CENTRE
PLANNING DEPARTMENT, GOVT. OF TELANGANA
B BLOCK, 8th FLOOR, SWARNAJAYANTHI COMPLEX,
AMEERPET, HYDERABAD

Mandal wise Major Crops,Kharif,2016-17
WARANGAL URBAN DISTRICT
 GOVERNMENT OF TELANGANA



Legend

- Mandal Headquarter
- Mandal Boundary
- RICE
- REDGRAM
- MAIZE
- Cotton



S. No.	Mandal	RICE	MAIZE	REDGRAM	Cotton
1	BHEEMADEVARPALLE	947	2298	43	5366
2	VELAIR	774	1232	123	2149
3	ELKATHURTHI	2118	838	283	4025
4	KAMALAPUR	4004	312	66	5237
5	HASANPARTHY	3264	400	63	3029
6	DHARMASAGAR	1674	1606	260	2899
7	KHAZIPET	866	407	279	886
8	HANAMKONDA	196	94	4	56
9	WARANGAL	148	50	28	381
10	KHILLA WARANGAL	601	594	85	1746
11	INAVOLE	1180	1369	193	4267
Total		15772	9200	1427	30041

Area in Hectors



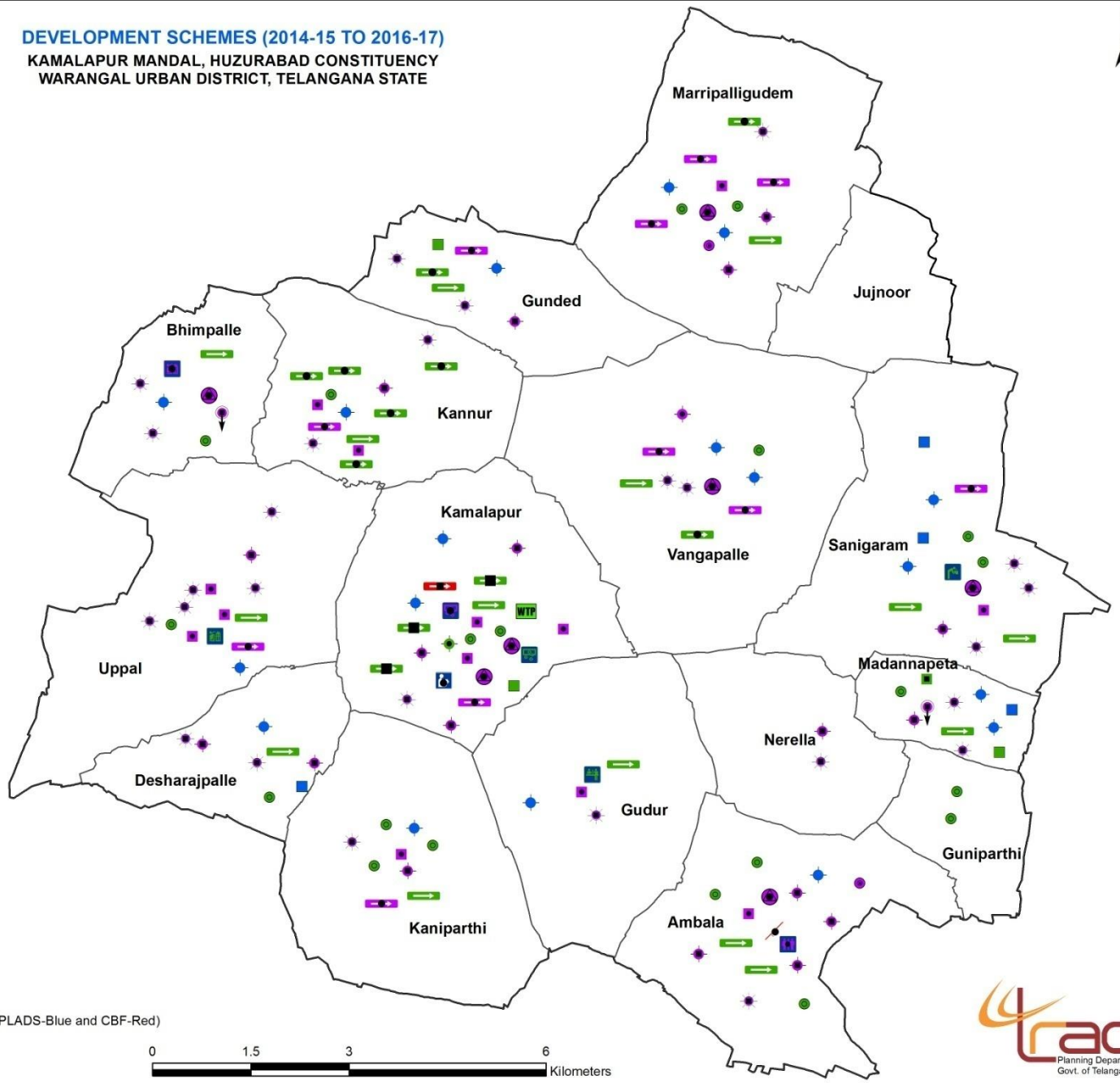
NOTE: AREA IN HECTORS

DEVELOPMENT SCHEMES (2014-15 TO 2016-17)
KAMALAPUR MANDAL, HUZURABAD CONSTITUENCY
WARANGAL URBAN DISTRICT, TELANGANA STATE



Legend

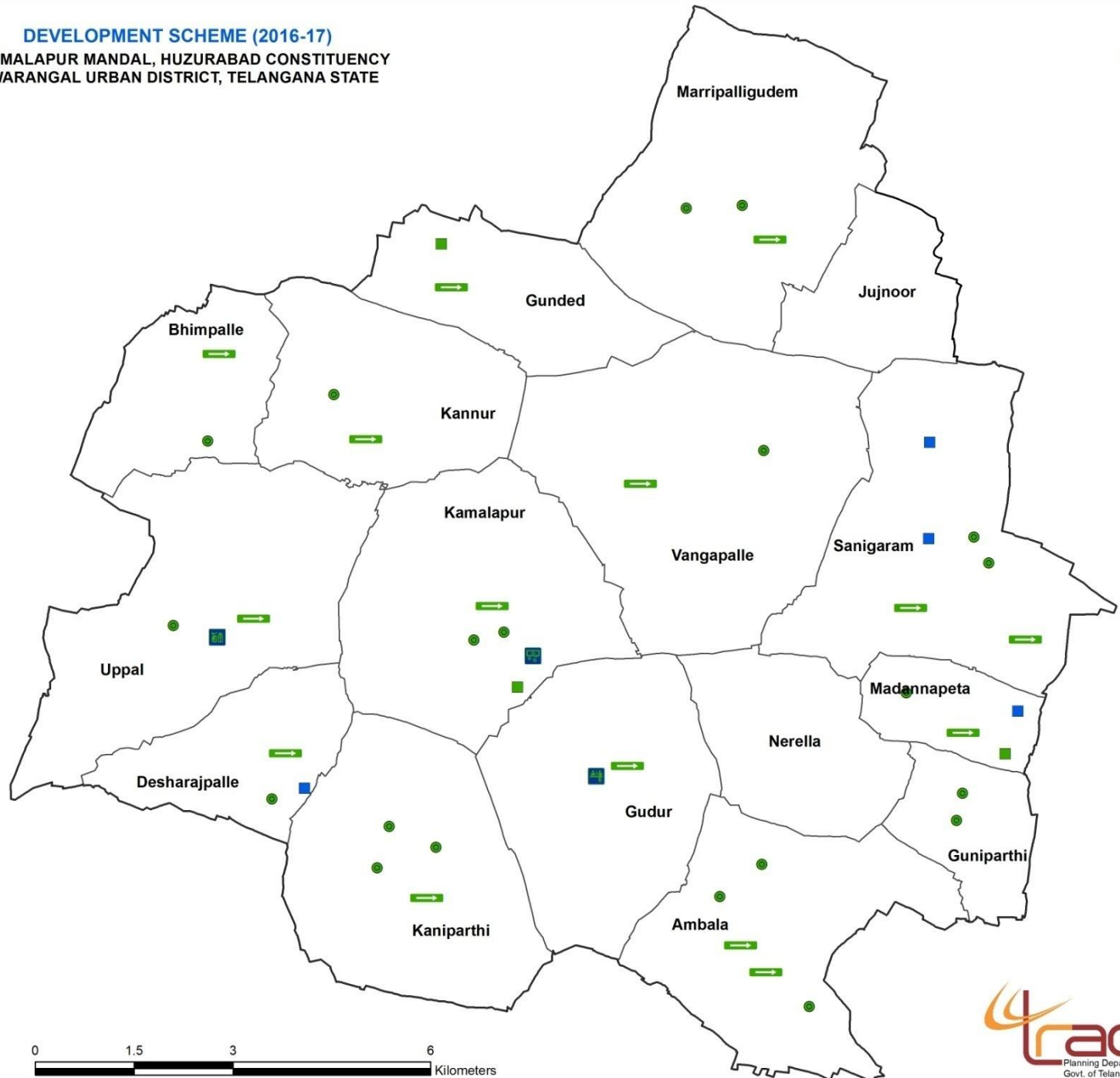
- Grampanchayat, SDF, 2015-16 (1)
- Library, SDF, 2015-16 (1)
- Anganwadi Building, SDF, 2015-16 (7)
- Agricultural Building, CDP, 2014-15 (1)
- Agricultural Building, SDF, 2015-16 (1)
- Community Hall, MPLADS, 2014-15 (4)
- Community Hall, CDP, 2014-15 (3)
- Community Hall, SDF, 2015-16 (13)
- Community Hall, CDP, 2016-17 (1)
- Rythu Bazar, CDP, 2014-15 (1)
- Bore and pumpset, CDP, 2015-16 (1)
- Bore and pumpset, MPLADS (18)
- Bore and pumpset, SDF, 2015-16 (1)
- Bore and pumpset, SDF, 2016-17 (18)
- Bore well with hand Pump, SDF, 2016-17 (26)
- Bore well, CDP, 2014-15 (20)
- Bore well, SDF, 2016-17 (2)
- Pumpset, SDF, 2016-17 (2)
- Water Plant, CBF, 2015-16 (1)
- Water Supply, CDP, 2015-16 (1)
- Compound wall, CBF, 2015-16 (1)
- Play Ground, CDP, 2014-15 (1)
- Play Ground, SDF, 2015-16 (1)
- Road, CBF, 2016-17 (1)
- Road, CDP, 2014-15 (15)
- Road, CDP, 2015-16 (8)
- Road, CDP, 2016-17 (3)
- Road, SDF, 2015-16 (11)
- Village Boundary
- Mandal Boundary



*Note: Symbol indicate work
 Colour indicate Scheme (CDP-Leaf Green, SDP-Violet, MPLADS-Blue and CBF-Red)
 Plain symbol is indicated to 2014-15.
 In symbol black dot is indicated to 2015-16
 In symbol black square is indicated to 2016-17



DEVELOPMENT SCHEME (2016-17)
KAMALAPUR MANDAL, HUZURABAD CONSTITUENCY
WARANGAL URBAN DISTRICT, TELANGANA STATE

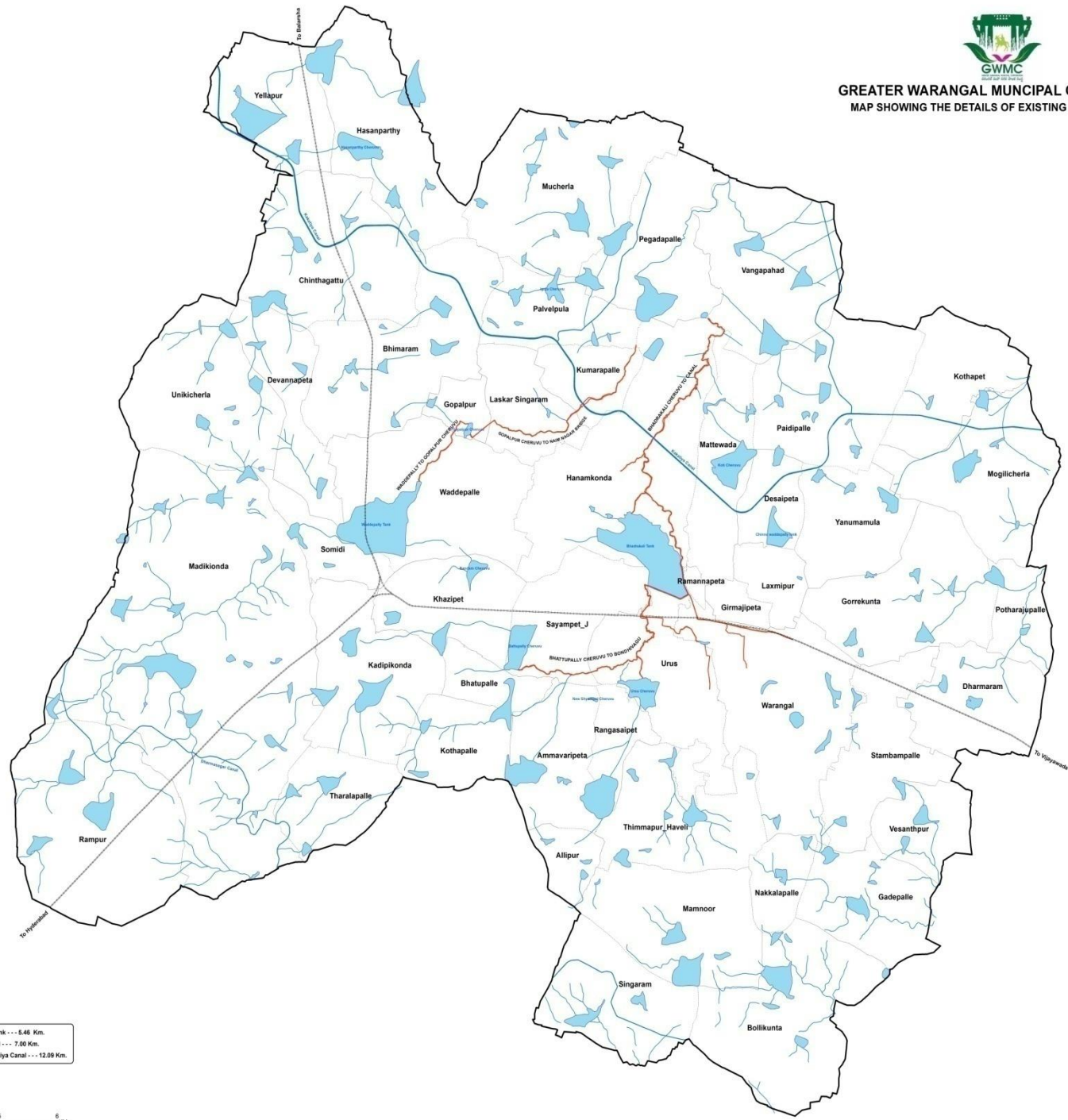


- Legend**
-  Agricultural Building, CDP, 2014-15 (1)
 -  Community Hall, MPLADS, 2014-15 (4)
 -  Community Hall, CDP, 2014-15 (3)
 -  Rythu Bazar, CDP, 2014-15 (1)
 -  Bore well, CDP, 2014-15 (20)
 -  Play Ground, CDP, 2014-15 (1)
 -  Road, CDP, 2014-15 (15)
 -  Village Boundary
 -  Mandal Boundary





GREATER WARANGAL MUNICIPAL CORPORATION
MAP SHOWING THE DETAILS OF EXISTING TANKS & NALAS



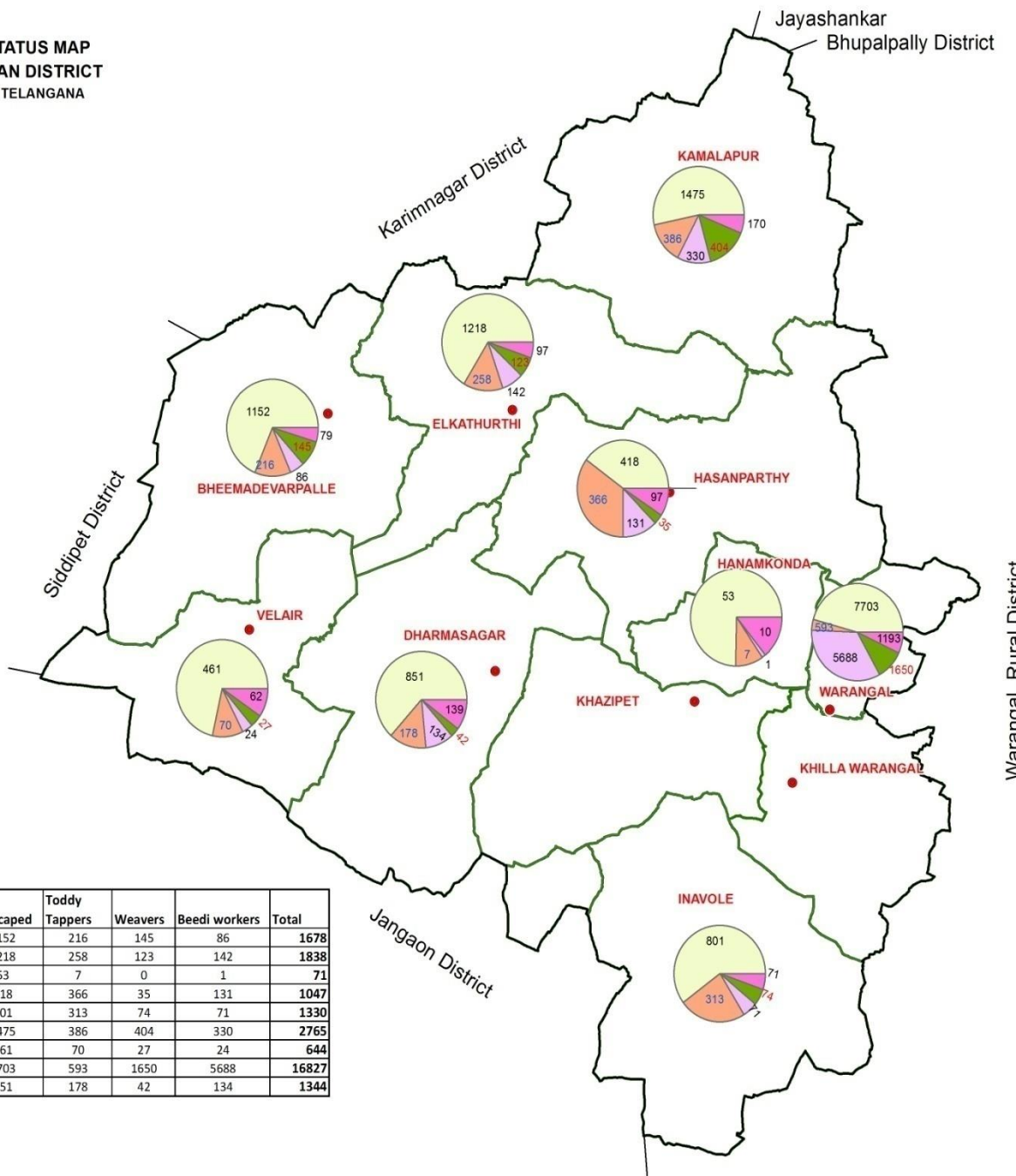
Legend

- Railway Line
- Canals
- Nalas
- Stream
- Tanks
- Village Boundary
- GWMC Boundary

1. BONDIVAGU : Flowing from Battupally Cheruvu to Bhadrakali Tank - - - 5.46 Km.
2. BHADRI NALA : Flowing from Bhadrakali Tank to Kakatiya Canal - - - 7.00 Km.
3. NAYEEM NAGAR NALA : Flowing from Waddepally Tank to Kakatiya Canal - - - 12.09 Km.



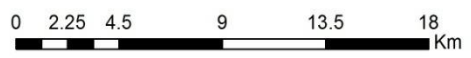
PENSIONERS STATUS MAP
WARANGAL URBAN DISTRICT
 GOVERNMENT OF TELANGANA



Legend

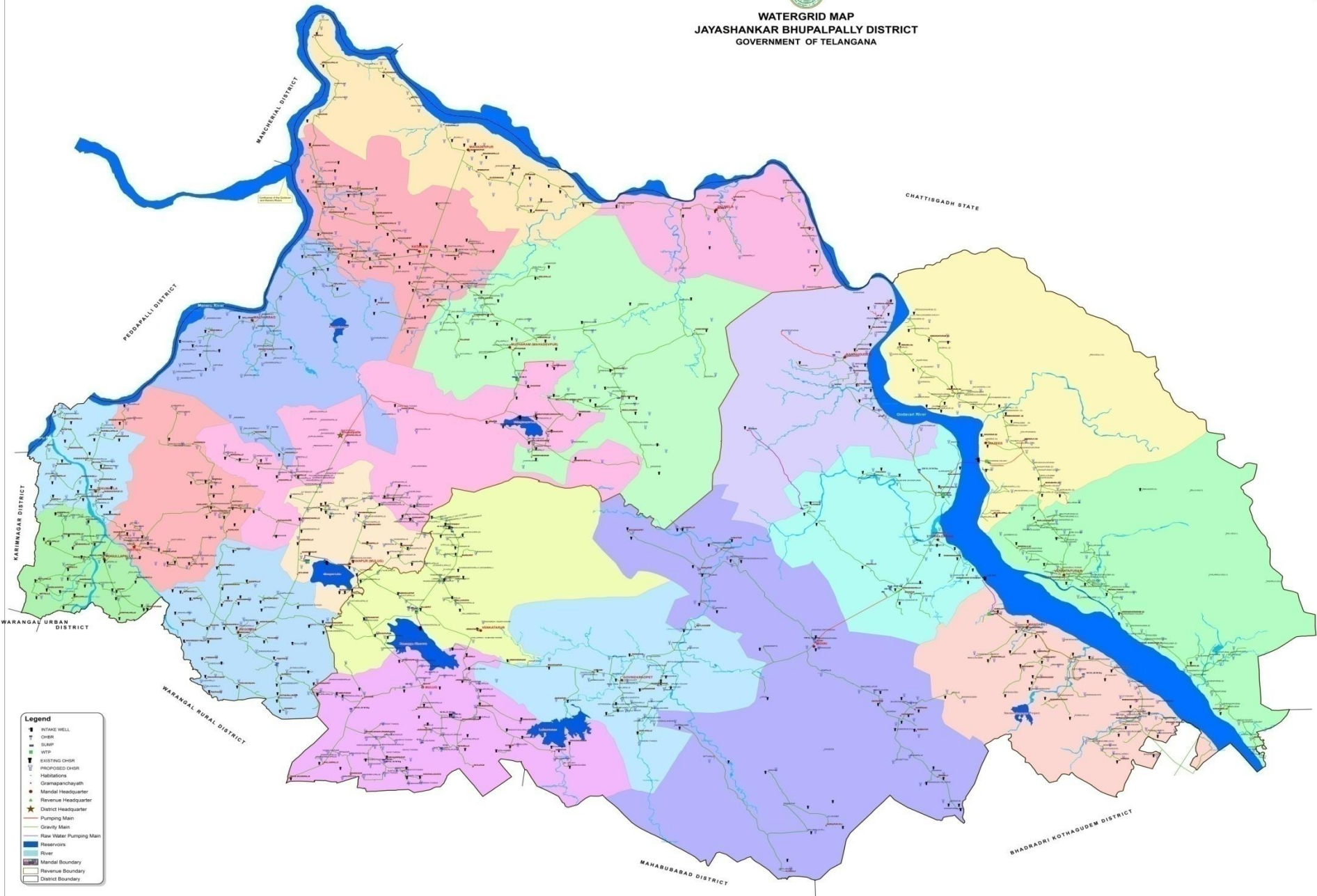
- Mandal Headquarter
- Handicaped Pensioners
- Toddy Tappers Pensioners
- Weavers Pensioners
- Beedi Worker Pensioners
- Single Women Pensioners
- Mandal Boundary
- District Boundary

Mandal Name	Single Women	Handicaped	Toddy Tappers	Weavers	Beedi workers	Total
Bheemadevarapalle	79	1152	216	145	86	1678
Elkathurthi	97	1218	258	123	142	1838
Hanamkonda	10	53	7	0	1	71
Hasanparthy	97	418	366	35	131	1047
Inole	71	801	313	74	71	1330
Kamalapur	170	1475	386	404	330	2765
Velair	62	461	70	27	24	644
Warangal	1193	7703	593	1650	5688	16827
Dharmasagar	139	851	178	42	134	1344





WATERGRID MAP
JAYASHANKAR BHUPALPALLY DISTRICT
 GOVERNMENT OF TELANGANA

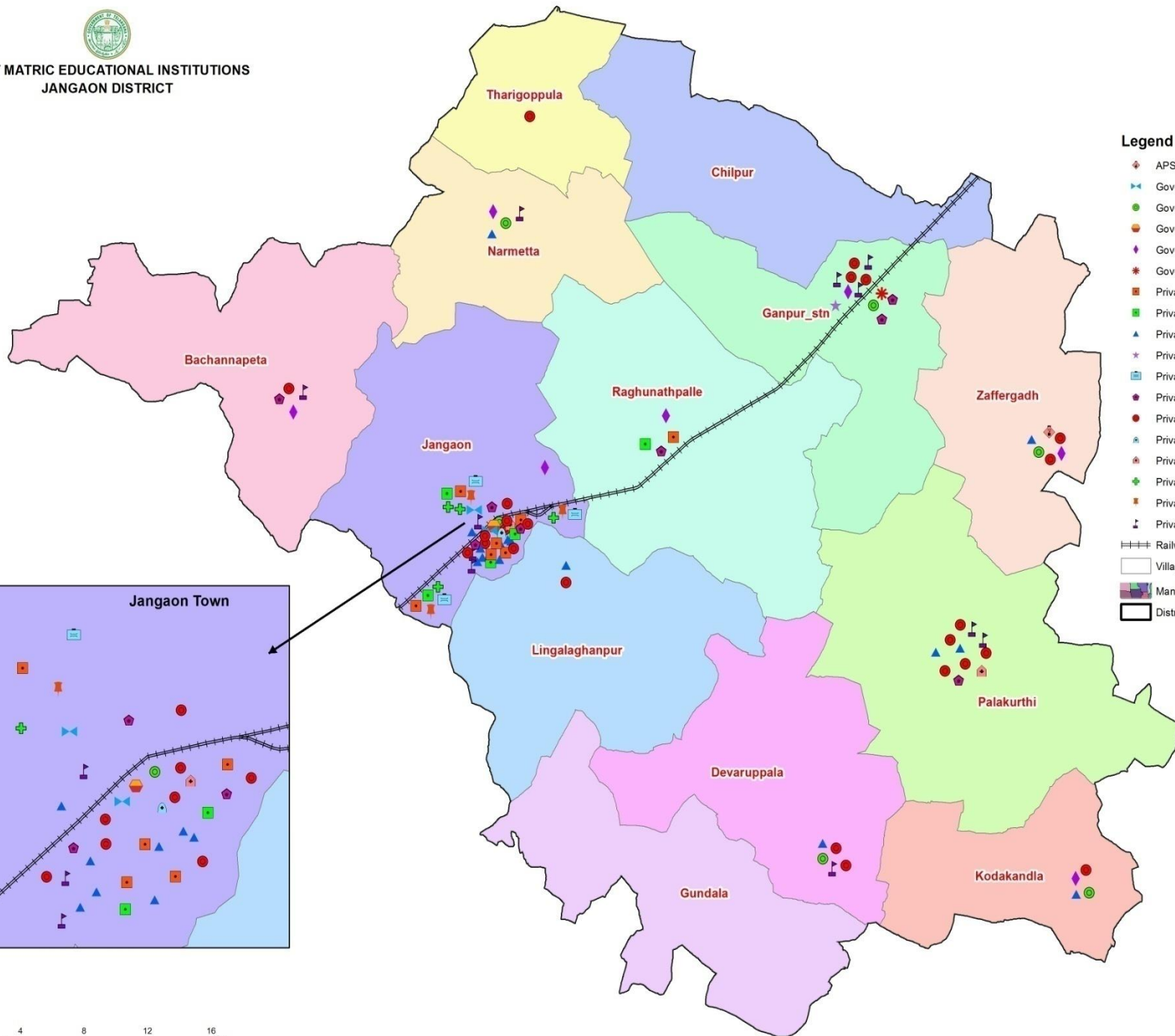


- Legend**
- INTAKE WELL
 - ▬ CANAL
 - WTP
 - EXISTING OHRM
 - ▬ PROPOSED OHRM
 - Habitations
 - Gramapanchayath
 - Mandal Headquarter
 - Revenue Headquarter
 - ★ District Headquarter
 - Pumping Main
 - Gravity Main
 - Raw Water Pumping Main
 - Reservoirs
 - ▬ River
 - ▬ Mandal Boundary
 - ▬ Revenue Boundary
 - ▬ District Boundary



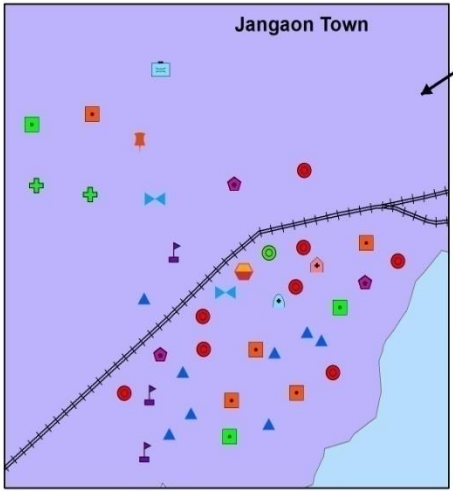


**POST MATRIC EDUCATIONAL INSTITUTIONS
JANGAON DISTRICT**



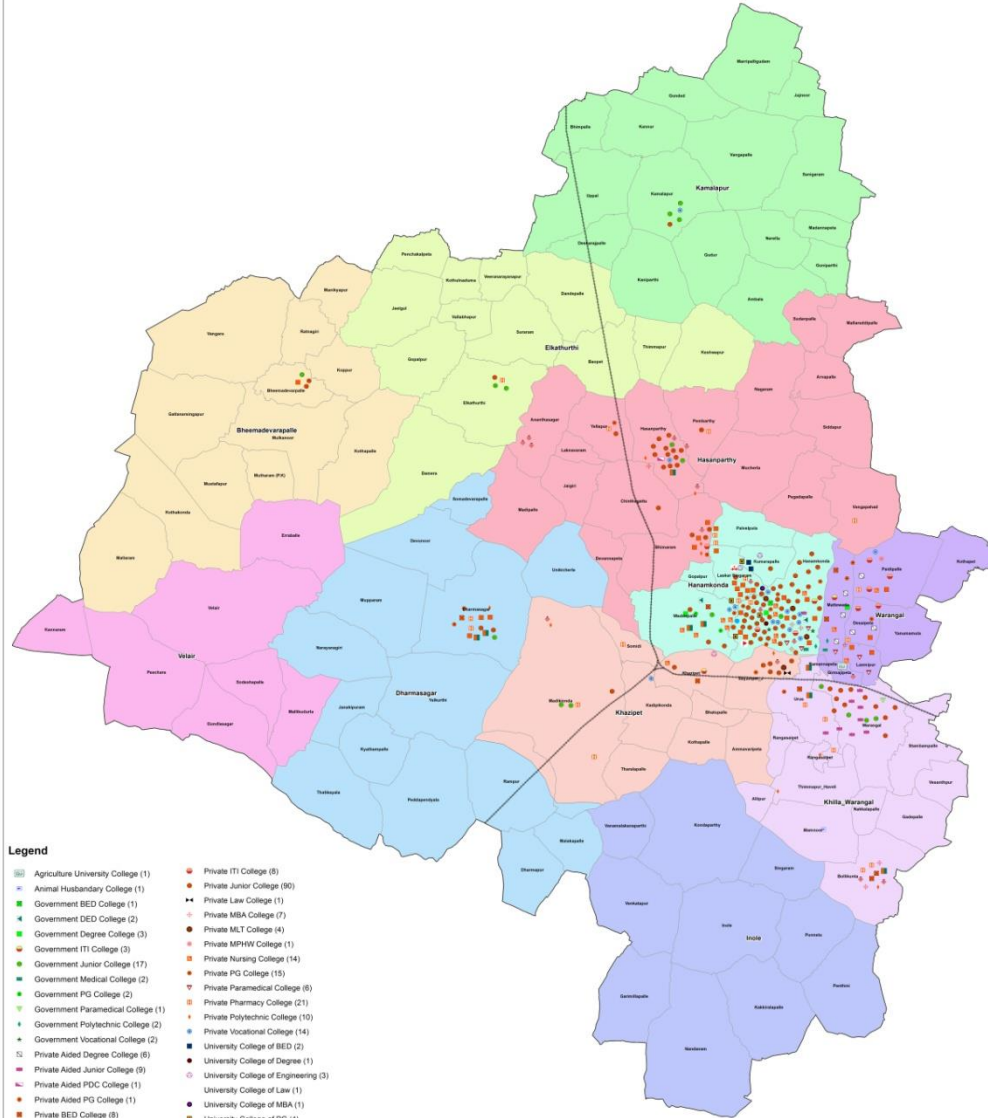
Legend

- APSWRJC for Girls (1)
- Government Degree and PG College (2)
- Government Junior College (6)
- Government Junior College for Girls (1)
- Government Model School/Junior College (7)
- Government Polytechnic College (1)
- Private Bed College (7)
- Private Ded College (5)
- Private Degree College (16)
- Private Degree and PG College (1)
- Private Engineering College (3)
- Private ITI College (8)
- Private Junior College (24)
- Private MPHA College (1)
- Private Paramedical College (2)
- Private Pharmacy College (4)
- Private Polytechnic College (3)
- Private Vocational Junior College (11)
- Railway Line
- Village Boundary
- Mandal Boundary
- District Boundary





POST MATRIC EDUCATIONAL INSTITUTIONS
WARANGAL URBAN DISTRICT



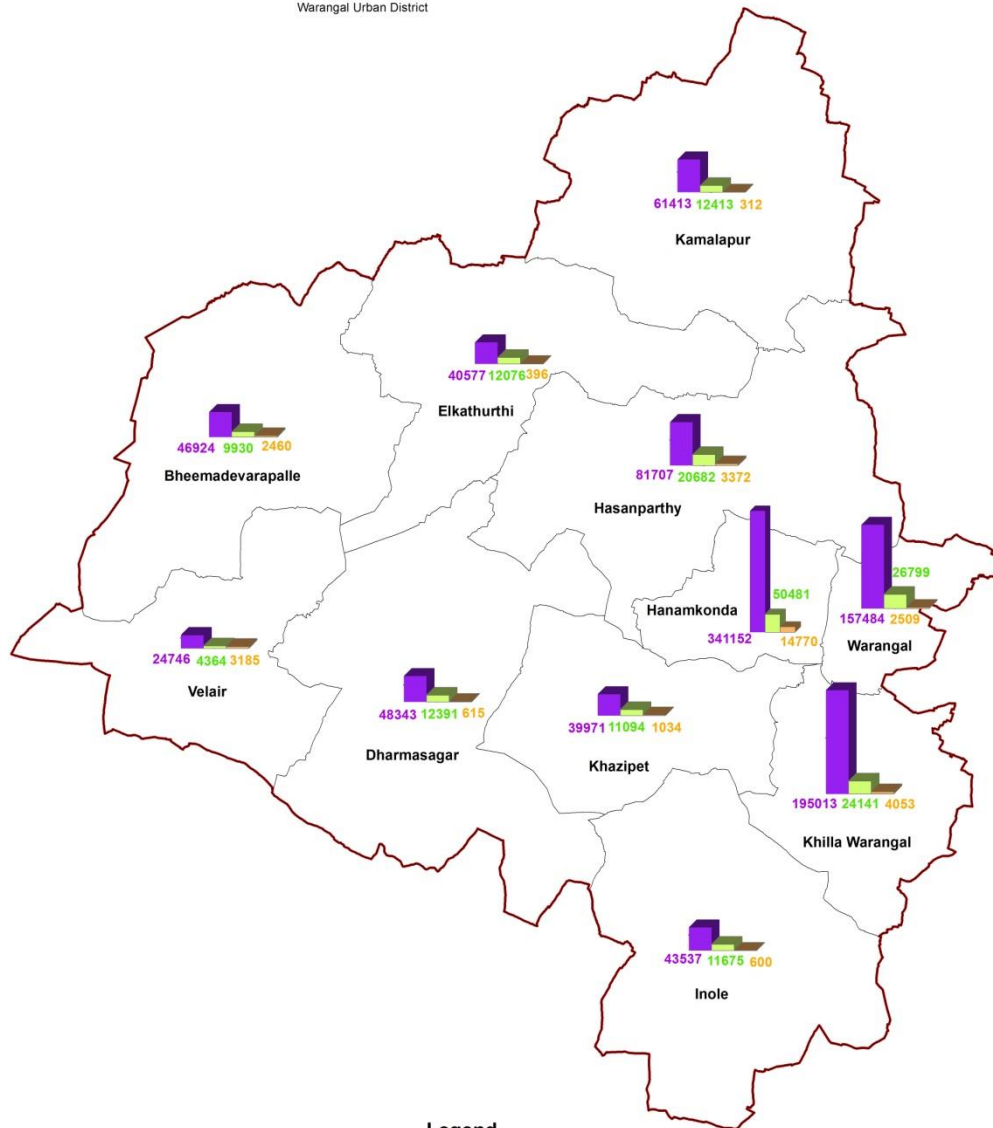
Legend

- Agriculture University College (1)
- Animal Husbandary College (1)
- Government BED College (1)
- Government DED College (2)
- Government Degree College (3)
- Government ITI College (3)
- Government Junior College (17)
- Government Medical College (2)
- Government PG College (2)
- Government Paramedical College (1)
- Government Polytechnic College (2)
- Government Vocational College (2)
- Private Aided Degree College (6)
- Private Aided Junior College (9)
- Private Aided PDC College (1)
- Private Aided PG College (1)
- Private Aided PG College (1)
- Private BED College (8)
- Private DED College (8)
- Private Degree College (27)
- Private Engineering College (15)
- Private Hotel Management (1)
- Private ITI College (8)
- Private Junior College (90)
- Private Law College (1)
- Private MBA College (7)
- Private MLT College (4)
- Private MPHW College (1)
- Private Nursing College (14)
- Private PG College (15)
- Private Paramedical College (6)
- Private Pharmacy College (21)
- Private Polytechnic College (10)
- Private Vocational College (14)
- University College of BED (2)
- University College of Degree (1)
- University College of Engineering (3)
- University College of Law (1)
- University College of MBA (1)
- University College of PG (4)
- University College of Pharmacy (1)





Government of Telangana
Population Map
 Warangal Urban District



Legend

- Total Population (1080867)
- SC Population (196046)
- ST Population (33306)
- Mandal Boundary (11)
- District Boundary



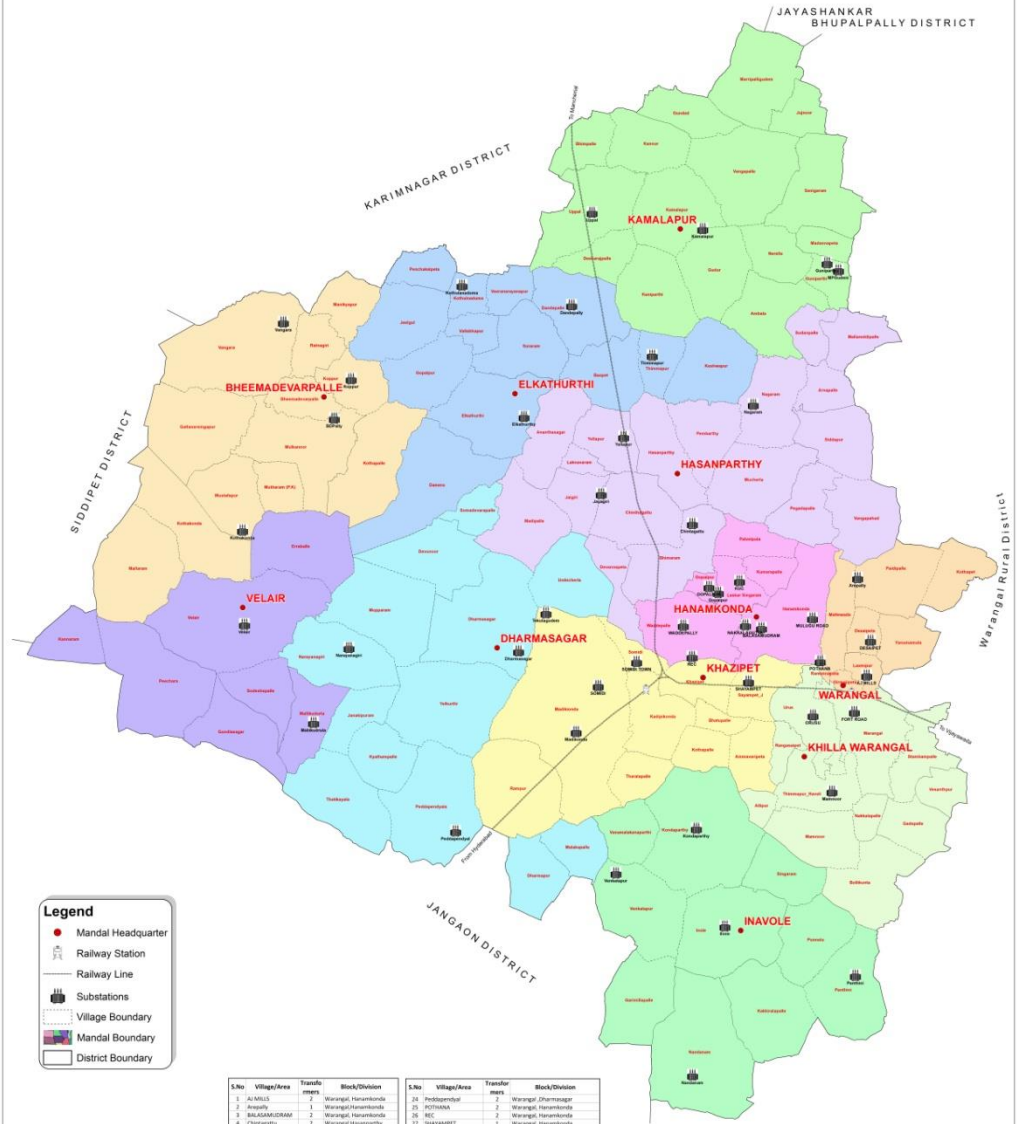
Population as per 2011 Cencus

AWS & REVENUE RAIN GAUGE STATIONS WARANGAL URBAN DISTRICT





**TSNPDCL SUBSTATIONS LOCATION MAP
WARANGAL URBAN DISTRICT
GOVERNMENT OF TELANGANA**



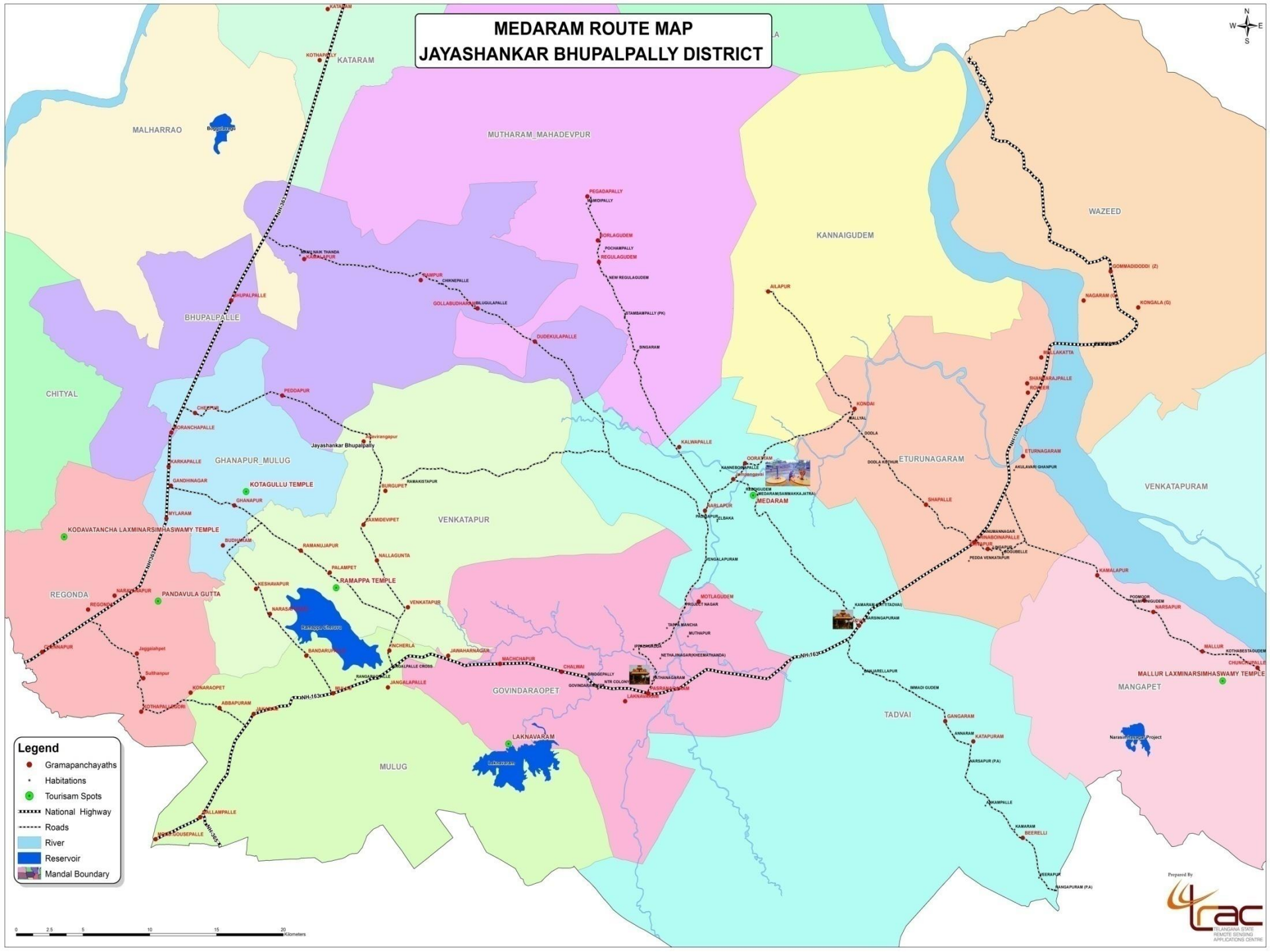
Legend

- Mandal Headquarter
- Railway Station
- Railway Line
- Substations
- Village Boundary
- Mandal Boundary
- District Boundary

S.No	Village/Area	Transformer	Block/Division	S.No	Village/Area	Transformer	Block/Division
1	A.MULLA	2	Warangal-Hanamkonda	24	Perthambet	2	Warangal-Dharmasagar
2	Aswaly	1	Warangal-Hanamkonda	25	PETHANET	2	Warangal-Hanamkonda
3	BALAJAMPURAM	2	Warangal-Hanamkonda	26	REC	2	Warangal-Hanamkonda
4	Chingalap	2	Warangal-Hasanparthy	27	SEEMANPET	1	Warangal-Hanamkonda
5	DESAIET	1	Warangal-Hanamkonda	28	SOADU	2	Warangal-Hanamkonda
6	Dharmasagar	1	Warangal-Dharmasagar	29	ROADS TOWN	1	Warangal-Hanamkonda
7	FORT ROAD	2	Warangal-Hanamkonda	30	Talukgudem	1	Warangal-Hanamkonda
8	Geetapur	1	Warangal-Hanamkonda	31	Velair	1	Warangal-Hasanparthy
9	GOPIPUR	1	Warangal-Hanamkonda	32	Venkatapur	1	Warangal-City/grad
10	Hane	1	Warangal-Dharmasagar	33	WADDEPALLY	1	Warangal-Hanamkonda
11	Jangali	1	Warangal-Hasanparthy	34	Velapur	1	Warangal-Hasanparthy
12	Kandhapurthy	1	Warangal-Hanamkonda	35	Chingalap	1	Warangal-Hanamkonda
13	KUC	2	Warangal-Hanamkonda	36	MFCudem	1	Warangal-Khatamgar
14	Maddur	2	Warangal-Hanamkonda	37	Khatamgar	2	Warangal-Khatamgar
15	Mallikarjuna	1	Warangal-Hasanparthy	38	Uppal	1	Warangal-Khatamgar
16	Mamapur	1	Warangal-Hanamkonda	39	Uppal	1	Warangal-Hanamkonda
17	MULLUJI ROAD	1	Warangal-Hanamkonda	40	Uppal	1	Warangal-Hanamkonda
18	Nagarani	1	Warangal-Hasanparthy	41	Bheemaveerpalke	1	Warangal-Bheemaveerpalke
19	NARAYANPET	2	Warangal-Hanamkonda	42	Bhathurthy	1	Warangal-Bheemaveerpalke
20	Nandamb	2	Warangal-Dharmasagar	43	Bhathurthy	2	Warangal-Bhathurthy
21	Narayana	1	Warangal-Hasanparthy	44	Thornagar	1	Warangal-Bhathurthy
22	ORLU	2	Warangal-Hanamkonda	45	Thornagar	1	Warangal-Bhathurthy
23	Parthib	2	Warangal-Warthanagpet	46	Kothanadubeta	2	Warangal-Bhathurthy



MEDARAM ROUTE MAP JAYASHANKAR BHUPALPALLY DISTRICT



Legend

- Gramapanchayaths
- Habitations
- Tourism Spots
- National Highway
- Roads
- River
- Reservoir
- ▭ Mandal Boundary

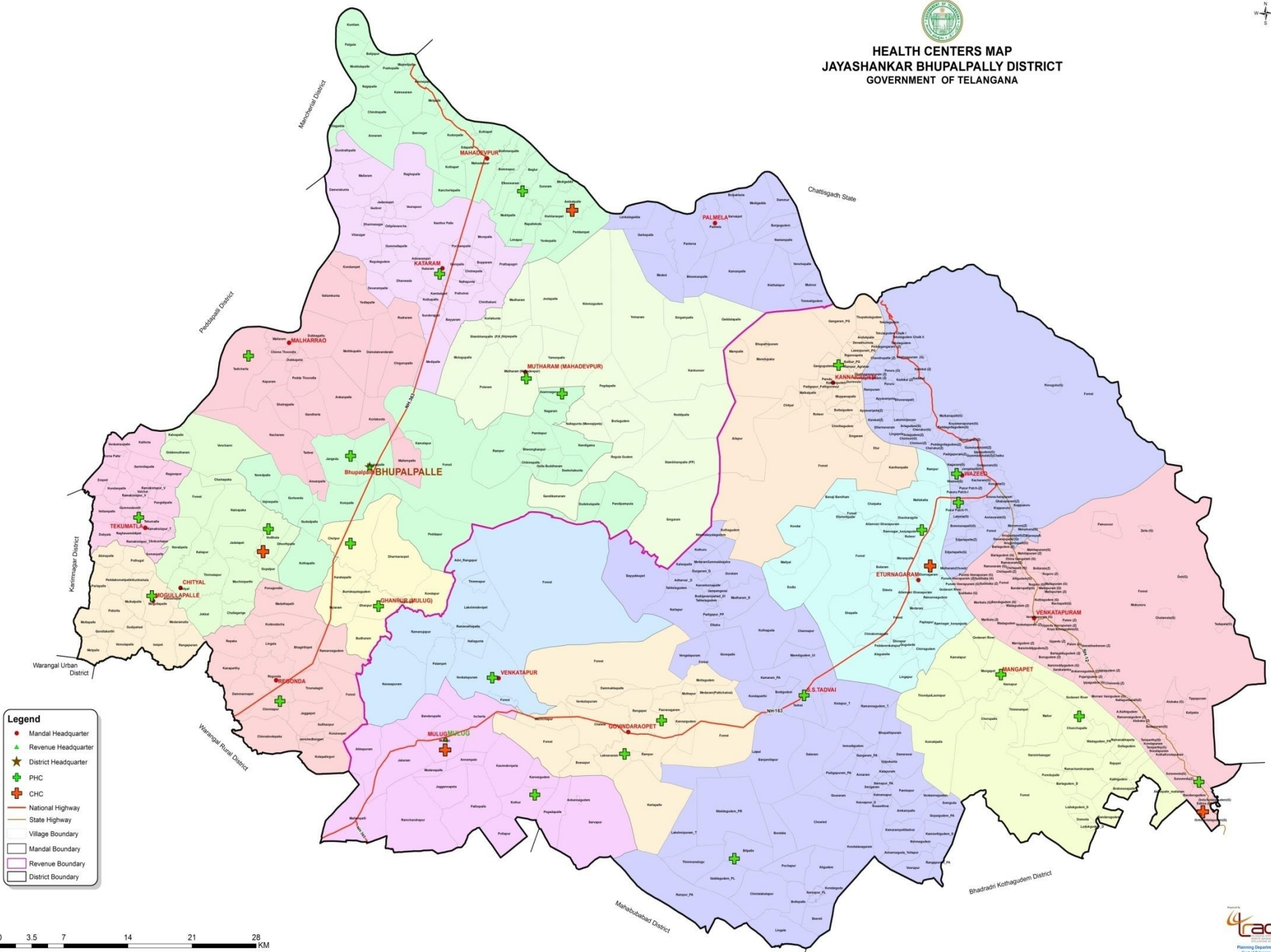




HEALTH CENTERS MAP

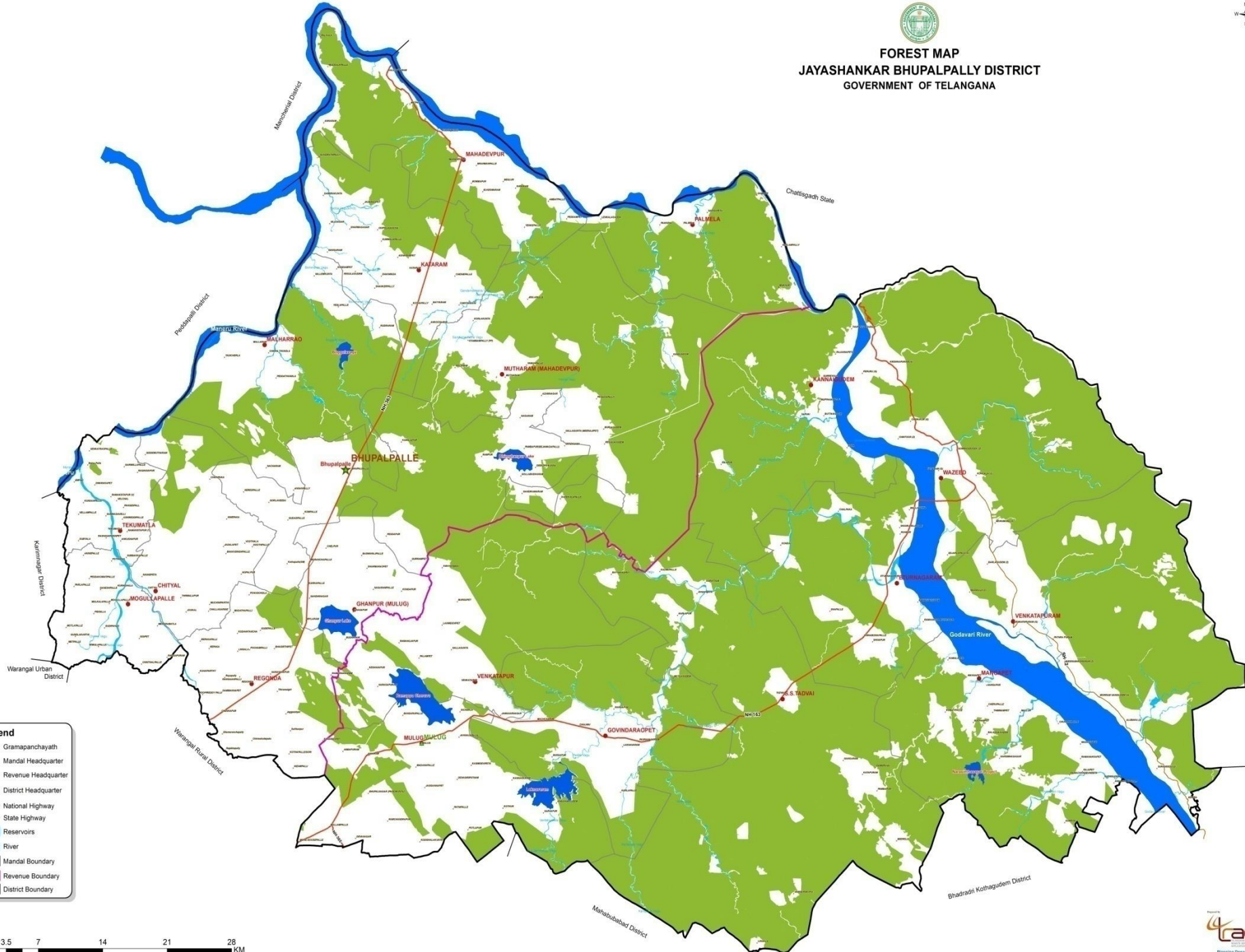
JAYASHANKAR BHUPALPALLY DISTRICT

GOVERNMENT OF TELANGANA





FOREST MAP
JAYASHANKAR BHUPALPALLY DISTRICT
 GOVERNMENT OF TELANGANA



Legend

- Gramapanchayath
- Mandal Headquarter
- ▲ Revenue Headquarter
- ★ District Headquarter
- National Highway
- State Highway
- Reservoirs
- River
- Mandal Boundary
- Revenue Boundary
- District Boundary



Warangal Regional Centre EoDB work status

District	No.of Villages	Completed	Pending	Digitization not Completed
Warangal Urban	124	123		1
Warangal Rural	229	207		22
Jangaon	193	149		44
Mahbubabad	287	249		38
Bhupalpally	299	249		50

- We are involved in the Field Data Collection and Ground Truth Information in Earstwhile Warangal District for Mapping of Land Degradation Project.
- Field Data is collected using the mobile application.
- Ground truth information along with the photographs will be uploaded on to the bhuvan site.
- All the soil samples locations should be recorded using the mobile app.
- All Samples labelled and packed properly and sent to TRAC office.



Soil sample collected at Vavilala village, Nekkonda (Mdl), Mahabubabbad Dist.



Water Erosion, LD Class G2 at Vanthadupula (Vill), Narsimhulapet (Mdl).



Thank You